

MONTHLY MEMBERSHIP PROGRESS REPORT

District 324 H

Results as of: 3/31/2024

GMT:

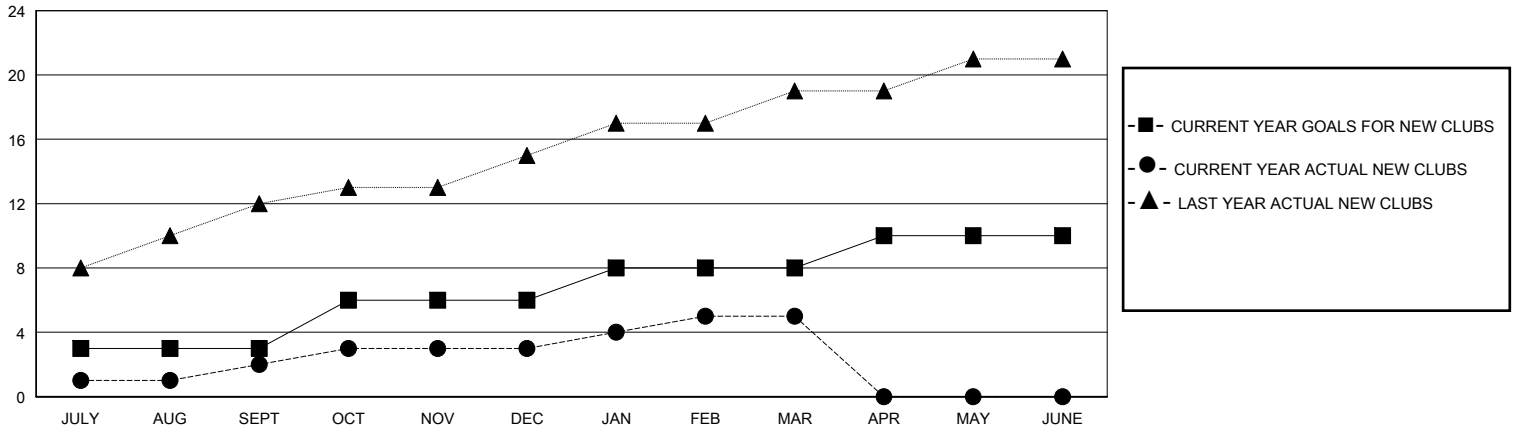
LOCATION INDIA

GMT CA

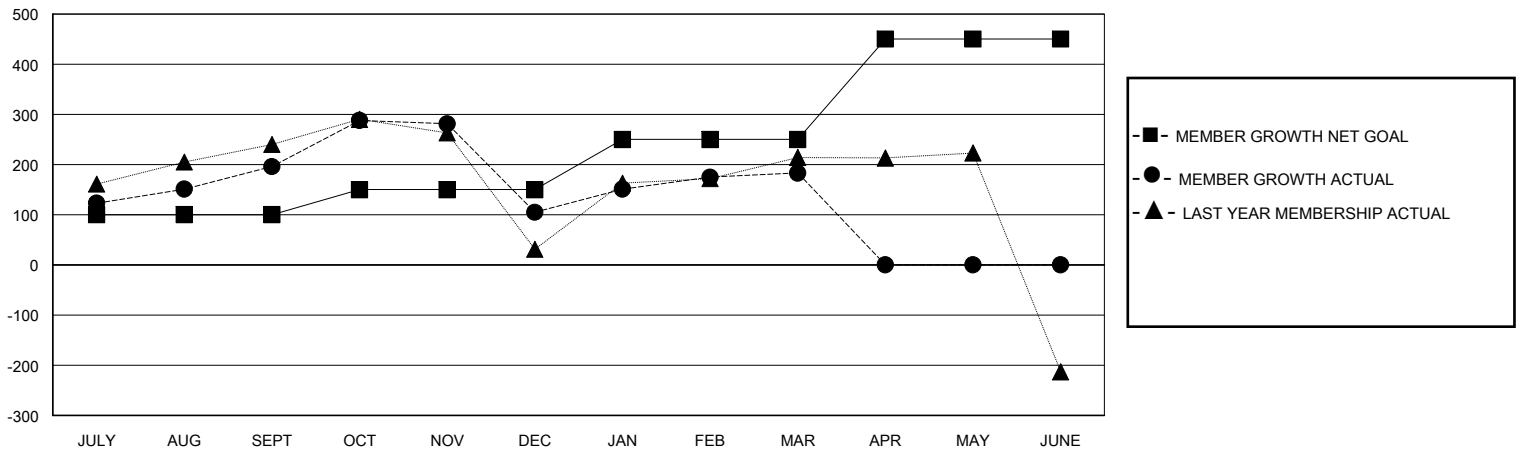
Clubs			
RESULTS FOR 2023-2024			
QUARTER	NEW CLUB GOAL	NEW CLUBS	DROPPED CLUBS
JULY/AUG/SEPT	3	2	2
OCT/NOV/DEC	3	1	5
JAN/FEB/MAR	2	2	1
APR/MAY/JUNE	2	0	0

Members			
RESULTS FOR 2023-2024			
QUARTER	MEMBER GROWTH NET GOAL	MEMBER GROWTH ACTUAL	DROPPED MEMBERS ACTUAL (including transfers)
JULY/AUG/SEPT	100	235	32
OCT/NOV/DEC	50	139	225
JAN/FEB/MAR	100	149	50
APR/MAY/JUNE	200	0	0

GOALS AND ACTUAL NEW CLUBS CUMULATIVE



GOALS AND ACTUAL MEMBERS CUMULATIVE



DROPPED CLUBS: 8	79 CLUBS OF 108 ADDED 1 OR MORE NEW MEMBERS	<u>GENDER DISTRIBUTION</u>	
<u>DROPPED MEMBERS</u>		MALE	2,746 (84.78%)
DECEASED	2	FEMALE	493 (15.22%)
CLUB CANCELLED	135	TOTAL FAMILY UNIT MEMBERS 831	
OTHER	170	FAMILY MEMBERS PAYING HALF DUES 485	
TOTAL	307		

[CLICK HERE FOR CUMULATIVE MEMBERSHIP DATA](#)